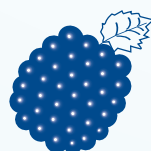


BERRYPURE® COMBI-CLASS



**THE PERFECT FUSION OF PURE AND ULTRAPURE WATER IN ONE
DEVICE, AS AN INDEPENDENT SUPPLY FOR YOUR LABORATORY
APPLICATIONS.**

ISO 9001:2015 CERTIFIED



Berrytec®

WHY BERRYPURE® COMBI-CLASS ?



1

ALL IN ONE SOLUTION

IT INTEGRATES ALL ESSENTIAL FEATURES LIKE RO+EDI+UP (UV+UF OPTIONAL) INTO SINGLE BODY



2

VERSATILE APPLICATIONS

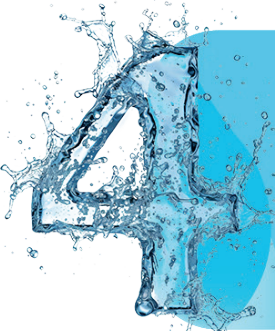
ALL THREE TYPES OF WATER (ASTM TYPE I, II, III) CAN BE REALIZED THROUGH ONE SYSTEM ENABLING IT TO HAVE VARIED INDUSTRY APPLICATIONS



3

COST EFFICIENT MAINTENANCE

MANUFACTURED ENTIRELY IN-HOUSE IN GERMANY, WITH AFFORDABLE CONSUMABLES FOR EASY REPLACEMENTS AND REDUCED LONG-TERM COSTS



4

USER FRIENDLY

DESIGNED WITH INTUITIVE USER INTERFACE, ENSURING EASE OF OPERATION, ENHANCED CONTROL, AND REAL-TIME MONITORING

BERRYPURE® COMBI-CLASS

ADVANCED ULTRAPURE WATER SYSTEM — TWO TECHNOLOGIES IN ONE

The **BERRYPURE® Combi-Class** is an innovative combination of two systems: the **BERRYPURE® UP-Class** ultrapure water system and the **BERRYPURE® ROEDI** module—integrated into one solution yet housed separately for flexible installation up to 8 meters apart.

This system provides ASTM Type I, II, and III pure and ultrapure water directly from tap water. Depending on the model, it can produce between 180 and 480 liters per day.

Key Features & Benefits

1. Direct Connection to Tap Water

The **BERRYPURE® Combi-Class** seamlessly connects to your tap water supply via a pre-softening cartridge, fine filter, and pre-filter. After reverse osmosis, the system already delivers **ASTM Type III water**.

- The **integrated EDI module** (model-dependent) or post-treatment cartridge further purifies the water to **Type II quality** with a conductivity of **<1 µS/cm**.
- Ideal for **daily lab applications** such as **autoclaves and laboratory dishwashers**.

2. Flexible Storage & Distribution

- **Type II water storage tanks** are available in **30, 60, and 100 liters**.
- Optional **recirculation and UV oxidation** for enhanced water quality.
- **Custom pump solutions** for external devices such as **laboratory dishwashers, autoclaves, and other lab equipment**.
- Delivers up to **480 liters per day** to various consumers.

3. Ultrapure Water for Critical Applications

- Designed for **high-purity laboratory environments**
- **Integrated TOC monitoring** (UP+ models)
- **Multiple dispensing points** for simultaneous access
- Reliable and efficient for **analytical applications, molecular biology, and research**

4. Space-Saving & Cost-Effective Design

- **Compact construction** despite high performance (dimensions similar to BERRYPURE® Mini)
- **More cost- and space-efficient** compared to competitor models

5. Advanced Monitoring & Control

- **Real-time TOC measurement** (available with UP+UV models)
- **Temperature and conductivity control** before Type I water dispensing
- **7-inch touchscreen for intuitive operation:**
 - High-resolution color display for easy navigation
 - Real-time monitoring of system performance and water quality
 - Touch-based settings for quick adjustments without complex configurations
- **PLC-based automation for:**
 - Process optimization and automatic regulation of water flow and pressure
 - Early fault detection and maintenance alerts
- **Enhanced safety features:**
 - Smart maintenance and filter replacement warnings
 - **Password-protected settings** for secure configuration
 - **Minimal training required** - ideal for laboratories and industrial applications
- **Adjustable Flow Rate**
 - Whether you need a **slow dispense** or a **fast flow of up to 2.1 L/min**, the system adapts to your needs.
 - **Pump speed is adjustable**, ensuring efficient water dispensing for any laboratory application.
- **Precise Volume Dispensing (0.01–50 liters per draw)**
 - Built-in **flow sensor and easy calibration** ensure accuracy.

6. Customizable Models

The **BERRYPURE® Combi-Class** offers flexible configurations to meet specific purity requirements:

- **UV Lamp (185 nm & 254 nm)** – Reduces microbial contamination and TOC levels
- **Ultrafiltration (UF) module** – Removes fine particles, bacteria, and endotoxins for sensitive applications

Available Models

- **Combi ROUP (UVUF):** Reverse osmosis combined with an ultrapure water system, featuring optional **UV and UF technology** for maximum contamination reduction
- **Combi ROEDIUP (UVUF):** Integrated **reverse osmosis and EDI**, paired with an ultrapure water system and optional **UV and UF technology**

Performance Options

- **RO System:** 12 L/h, 24 L/h or 36 L/h of high-quality water
- **EDI System:** 10 L/h, 20 L/h or 30 L/h continuous ultrapure water supply

7. Industry Applications

The **BERRYPURE® Combi-Class** is ideal for various industries and applications:

Healthcare & Medical Laboratories

- **Autoclaves & Sterilization** – Reliable ultrapure water for sterilizing medical instruments
- **Clinical Diagnostics & Pathology** – ASTM Type I, II, and III water for sample preparation and testing
- **Pharmaceutical Production** – High-purity water for drug manufacturing

Research & Analytical Laboratories

- **Chemical & Biochemical Research** – High-purity water for sensitive experiments
- **Molecular Biology & Genomics** – Reduces contamination risks in PCR, sequencing, and cell culture applications
- **Analytical Instruments** – Consistent water quality for **HPLC, GC-MS, and ICP-MS** analyses

Industry & Manufacturing

- **Electronics & Semiconductor** – Ultrapure water for cleaning delicate components
- **Automotive & Aerospace** – Water for **surface treatment and precision cleaning**
- **Cosmetics & Personal Care** – Ensures compliance with purity standards in product formulations

Food & Beverage Industry

- **Bottled Water & Beverage Production** – Consistently high water quality for manufacturing
- **Quality Control** – Ultrapure water for product testing and regulatory compliance

Environmental & Water Analysis

- **Wastewater Treatment Facilities** – Accurate water sample analysis
- **Regulatory & Control Laboratories** – Consistent water quality for environmental monitoring

8. Efficient Maintenance & Compliance

- **Low Operating Costs** – Designed for cost efficiency and minimal maintenance.
 - **Durable, high-quality components** ensure long-term reliability.
 - Manufactured entirely in **Germany** for premium quality.
- **RFID-enabled cartridge monitoring** with color-coded service alerts
- **Automated control** – PLC-driven regulation of water flow, pressure, and dosing
- **Optional 21 CFR-compliant monitoring software** – Ideal for **regulated industries with strict compliance requirements**

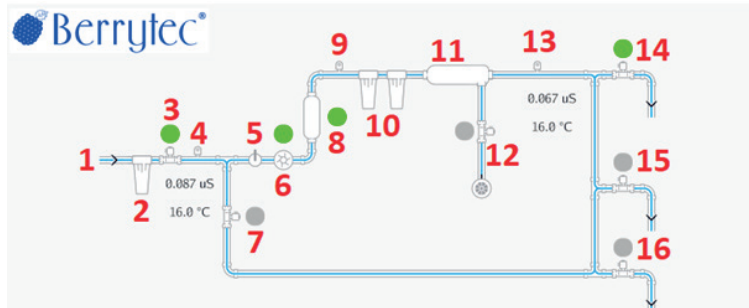
9. Optimized Water Quality with Continuous Recirculation

- **Valve chamber rinse function** ensures water quality remains at peak levels
- **Innovative technology, intuitive operation, and versatile applications** make the BERRYPURE® Combi-Class the **perfect solution for those demanding the highest purity standards in water treatment**

FLOWSCHEME

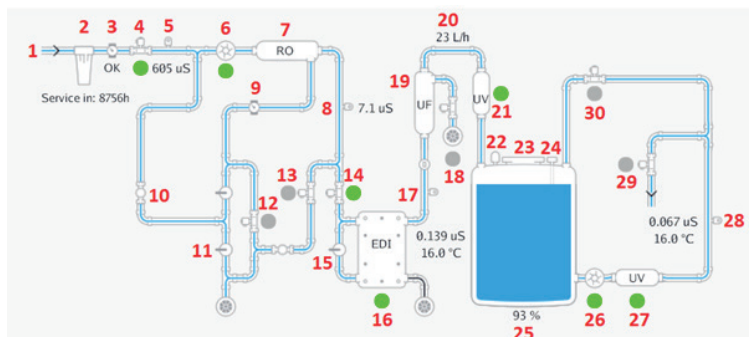
Berrypure® Combi-Class is an ideal combination of two systems: the Berrypure® UP-Class ultrapure water system and the Berrypure® ROEDI module combined as one device. Below you will find the flow diagram of both systems:

Berrypure® UP-Class module:

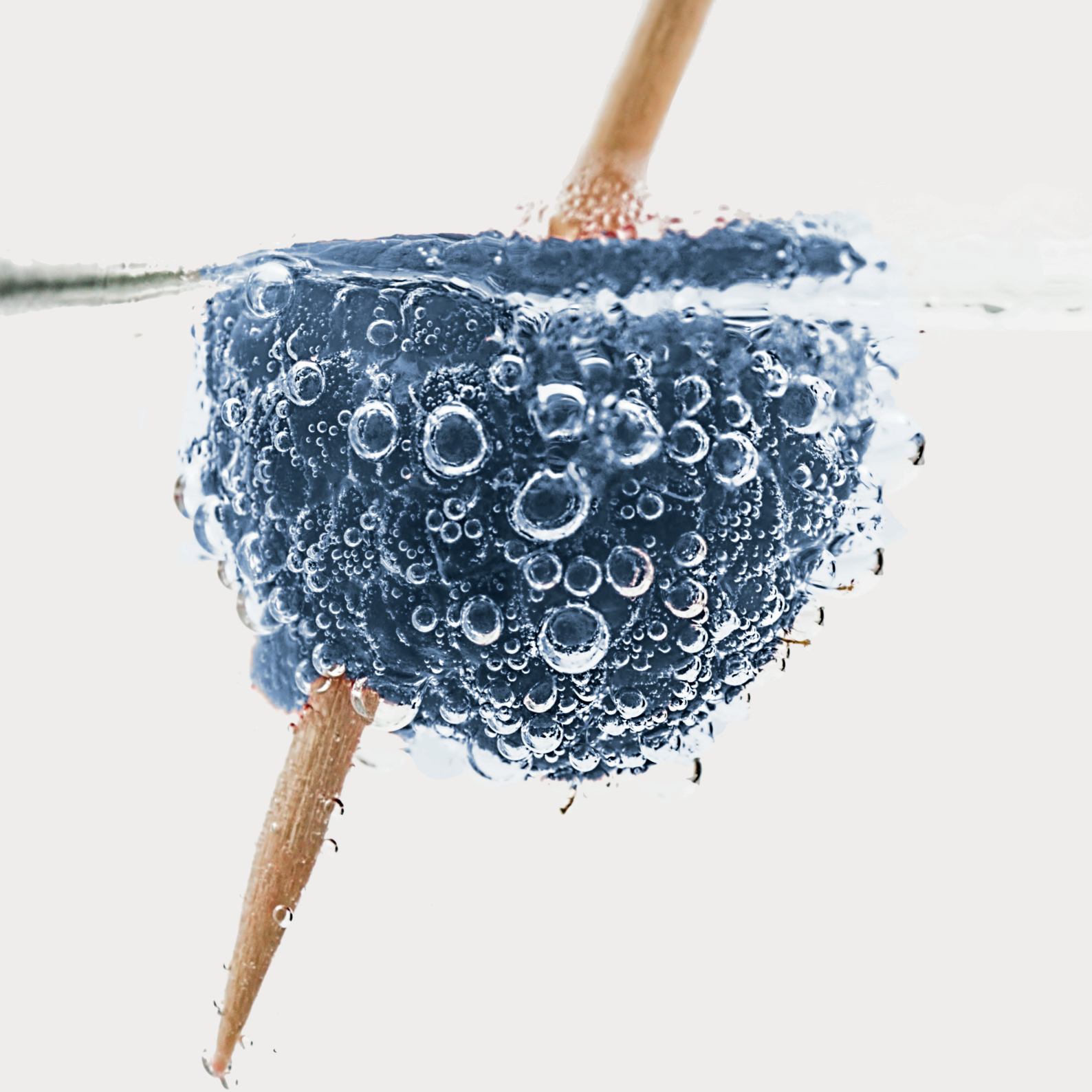


- | | |
|---|---|
| <ol style="list-style-type: none"> 1. Pressure sensor 2. Pre-treatment (optional) 3. Inlet solenoid valve 4. Inlet conductivity sensor 5. Flow meter 6. Recirculation pump 7. Recirculation valve 8. UV housing with UV lamp (optional) | <ol style="list-style-type: none"> 9. Conductivity sensor TOC (optional) 10. Ultrapure cartridges 11. Ultrafiltration module (optional) 12. Rinse valve 13. Conductivity sensor for ultrapure water incl. temperature sensor 14. Dispensing valve 1 15. Dispensing valve 2 (optional) 16. Dispensing valve 3 (optional) |
|---|---|

Berrypure® ROEDI Modul:



- | | |
|---|---|
| <ol style="list-style-type: none"> 1. Tap water / softened water inlet 2. Pre-filter AK/FF 3. Low-pressure switch / pressure gauge at inlet pressure 4. Inlet solenoid valve 5. Temperature measuring cell 6. RO pump 7. RO membrane 8. Permeate – conductivity measuring point 9. Pressure gauge membrane pressure 10. Recirculation controller 11. Concentrate waste controller 12. RO flush solenoid valve 13. Permeate – waste valve 14. Permeate – product valve 15. EDI waste controller | <ol style="list-style-type: none"> 16. EDI cell 17. EDI – conductivity measuring cell 18. Diagate – waste valve 19. UF module (optional) 20. Product display, flow meter (optional) 21. Bactericidal UV lamp (optional) 22. Tank ventilation 23. Tank lid 24. Tank level measurement 25. Storage tank 26. Distribution pump with pressure sensor 27. UV lamp loop line 28. Type II – conductivity measuring cell (optional) 29. Ultrapure water outlet (optional), distribution line 30. Recirculation valve / pressure holding valve (optional) |
|---|---|



Berrytec®

Berrytec GmbH
Schwablweg 15
85630 Harthausen
Germany

kontakt@berrytec.eu
Tel: +49 8106/3790-22
www.berrytec.net